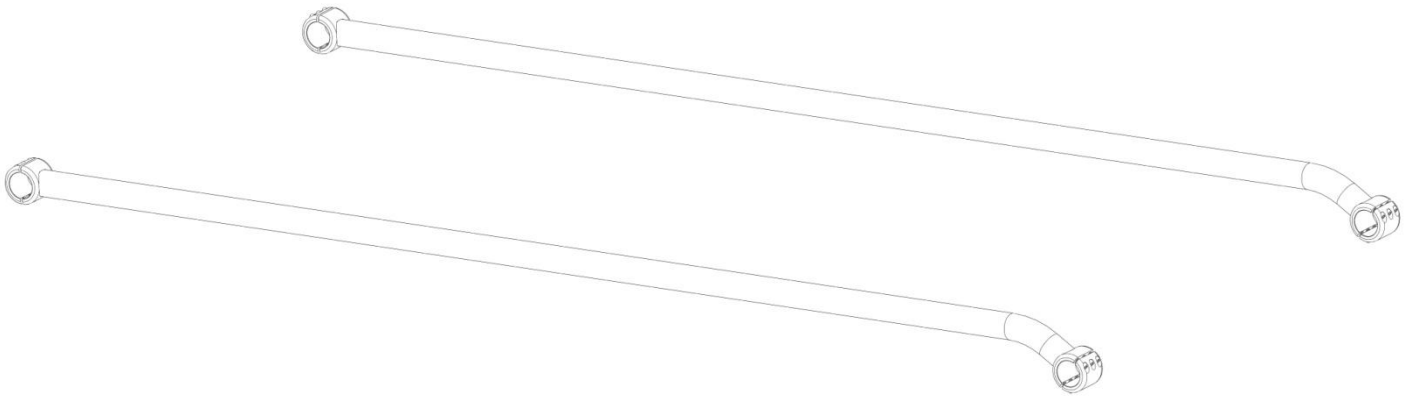




---

# Installation Guide

---



55025-R1 - 2Dr

55020-R1 - 4Dr

---

Kargo Master Safari  
Rancho Cordova, CA 95742  
800-343-7486  
CustomerService@Safari.com


---

---

**\*PLEASE READ ALL INSTRUCTIONS AND WARNINGS PRIOR TO ASSEMBLING,  
INSTALLING AND USING THIS PRODUCT\***

---

## **Warning**

 Always check for wires, fuel tanks and lines, brake lines and other important vehicle functionality items prior to drilling and installing all products.

---

## **Tools Needed**

- 1/4" Allen Hex
- 

## **Table of Contents**

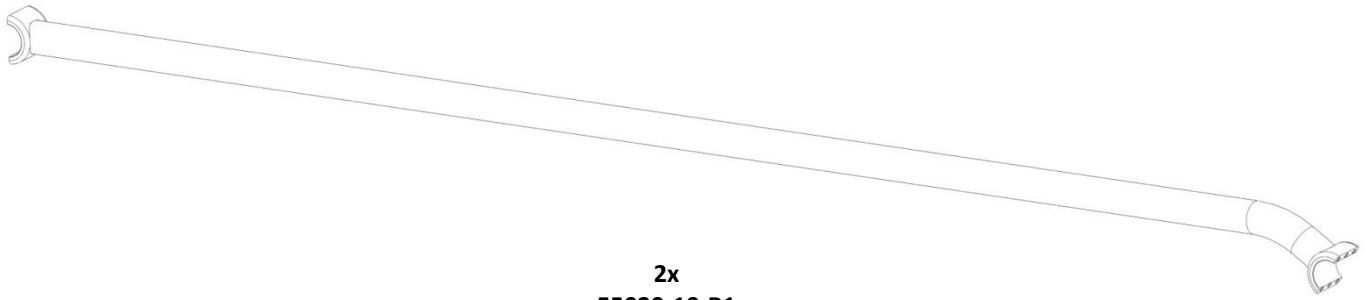
Parts List .....	3
Hardware List .....	3
Step 1 .....	4
Step 2 .....	4
Step 3 .....	4
Step 4 .....	5
Step 5 .....	4

---

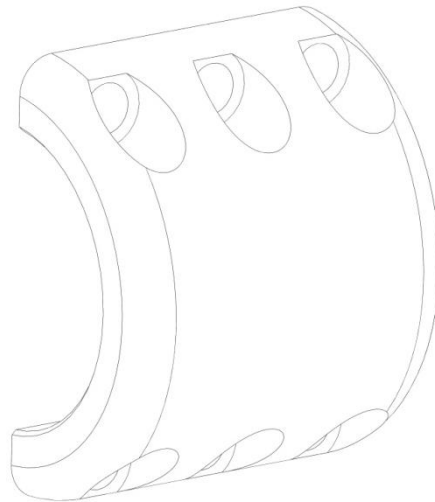
## **Before You Begin**

Be sure to have 55015 or 55016 installed on JEEP.

Be sure to have 55026 purchased and ready to install on JEEP.




2x  
**55020-10-R1**  
**4Dr Roof Rail**  
 or  
**55025-10-R1**  
**2Dr Roof Rail**



4x  
**55020-10**  
**4Dr Roof Rail CAP**

HARDWARE (to scale)

	PART NUMBER	Description	QTY.
	90128A582	5/16"-18 x 7/8" Socket Head Cap	24

## Step 1

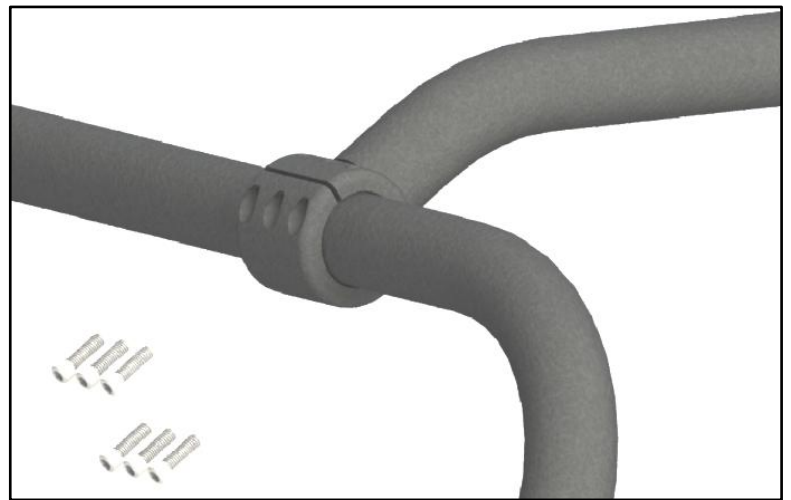
- Be sure to have Congo Pro JK A-Frame (55015) and Congo Pro JK Rear Hoop (55026) installed on your 4dr JEEP.  
\*2 door shown

**\*\*DO NOT TIGHTEN ANY BOLTS UNTIL ALL BOLTS ARE INSTALLED\*\***



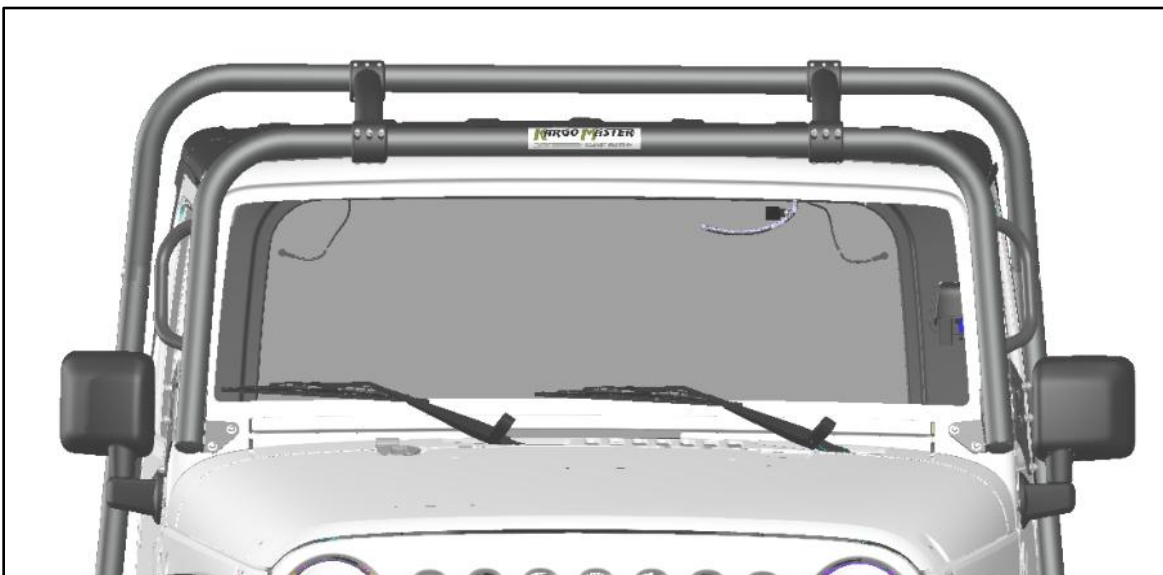
## Step 2

- Place the formed end of the roof rail towards the front of the JEEP and install cap using the six allen bolts. This should clamp around the Congo Pro JK A-Frame (55015).
- \*See Picture



## Step 3

- Position the roof rails to your liking or 40.8" apart if installing a Kargo Master Safari Platform.



## Step 4

- Attach the straight end of the roof rails to the Congo Pro JK Rear Hoop (55026) and install the cap using six allen bolts. This should clamp around the rear hoop.  
\*See Picture



## Step 5

- **TIGHTEN** all bolts from previous steps



Your installation is now complete