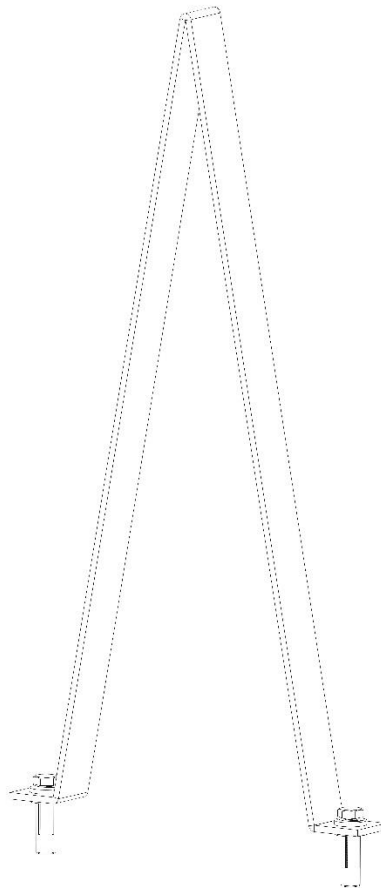




WE PUT EVERYTHING WITHIN REACH.

Installation Guide

40180



Kargo Master
Rancho Cordova, CA 95742
800-343-7486
CustomerService@KargoMaster.com

DATE: _____

***PLEASE READ ALL INSTRUCTIONS AND WARNINGS PRIOR TO ASSEMBLING,
INSTALLING, AND USING THIS PRODUCT***

Warning



Always check for wires, fuel tanks and lines, brake lines and other important vehicle functionality items prior to drilling and installing all products.

Tools Needed

25/64" Drill	7/16" Wrench and Socket
Plus Nut Tool	

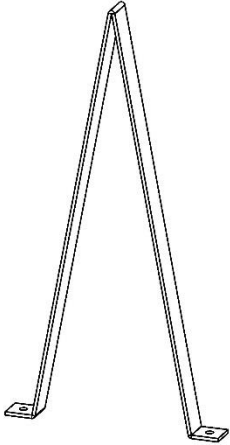
Table of Contents

Parts List 2
Hardware List 2
Step 1 Find Location 3
Step 2 Attach 4

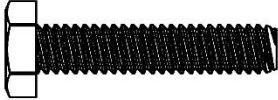
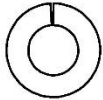
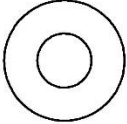
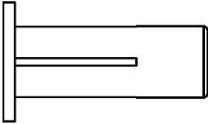
Before You Begin

- Read all instructions.
 - ENSURE SAFETY PRIOR TO DRILLING.
 - Product can be installed anywhere on the floor of the vehicle. Be sure to ensure safety prior to drilling.
-

Parts

ITEM NO.		PART NUMBER	DESCRIPTION	QTY.
A		40180-00-001	Cone Holder	1
		18-40180	Hardware	1

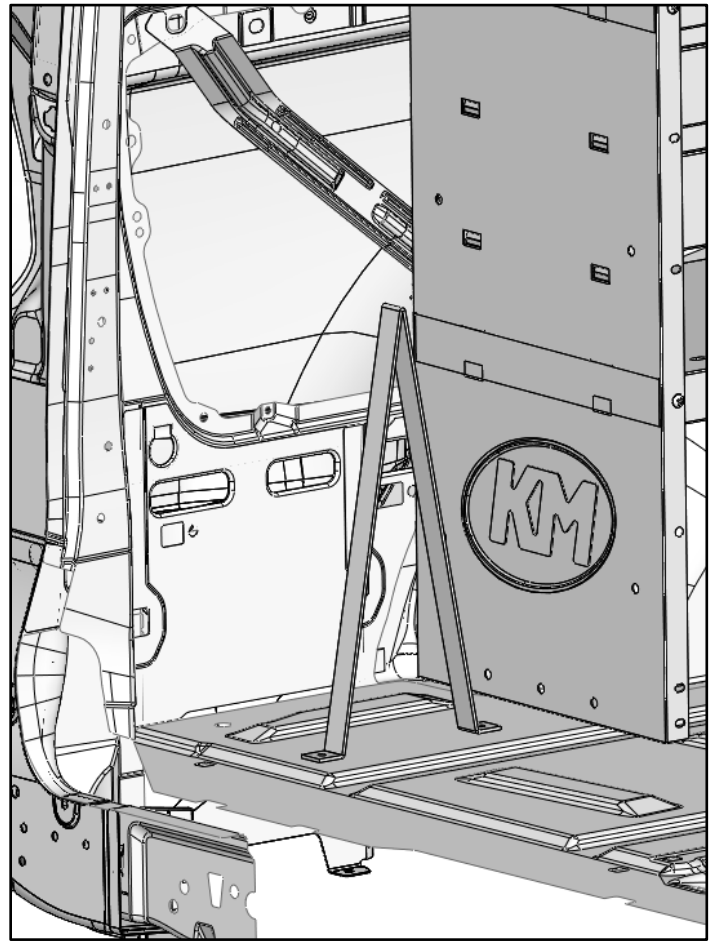
Hardware

ITEM NO.	TO SCALE	PART NUMBER	DESCRIPTION	QTY.
1		92865A544	1/4"-20 x 1-1/4" Hex Head	2
2		91102A750	1/4" Split Lock Washer	2
3		90126A029	1/4" Flat Washer	2
4		.25-20 Plus Nut	1/4"-20 Plus Nut	2

Step 1 – Find Location

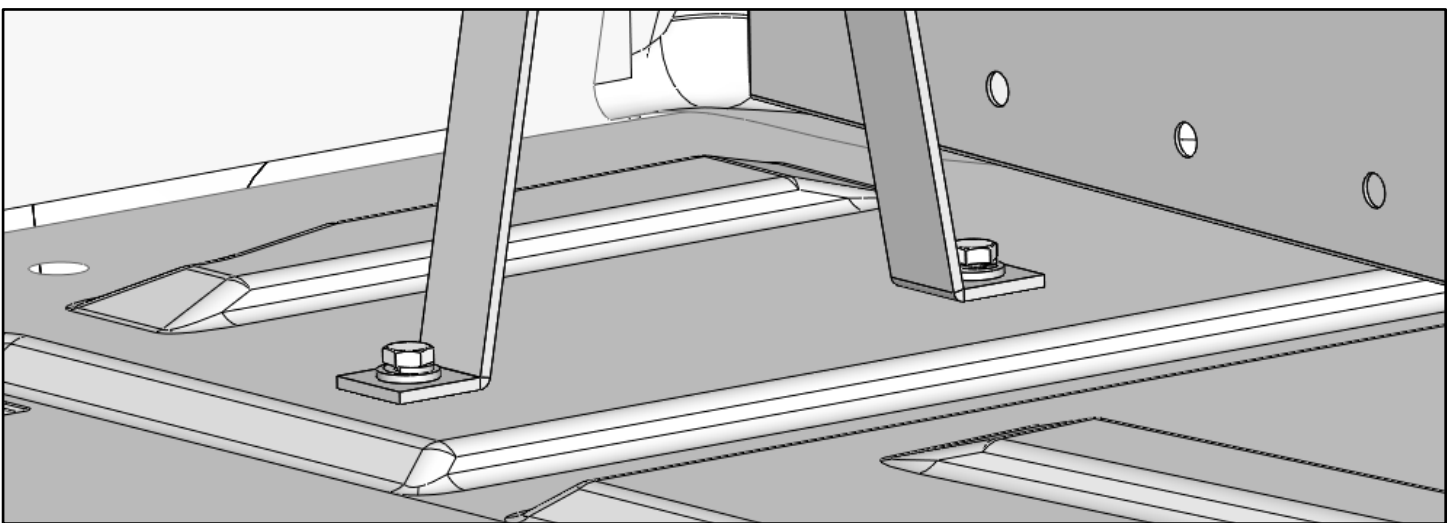
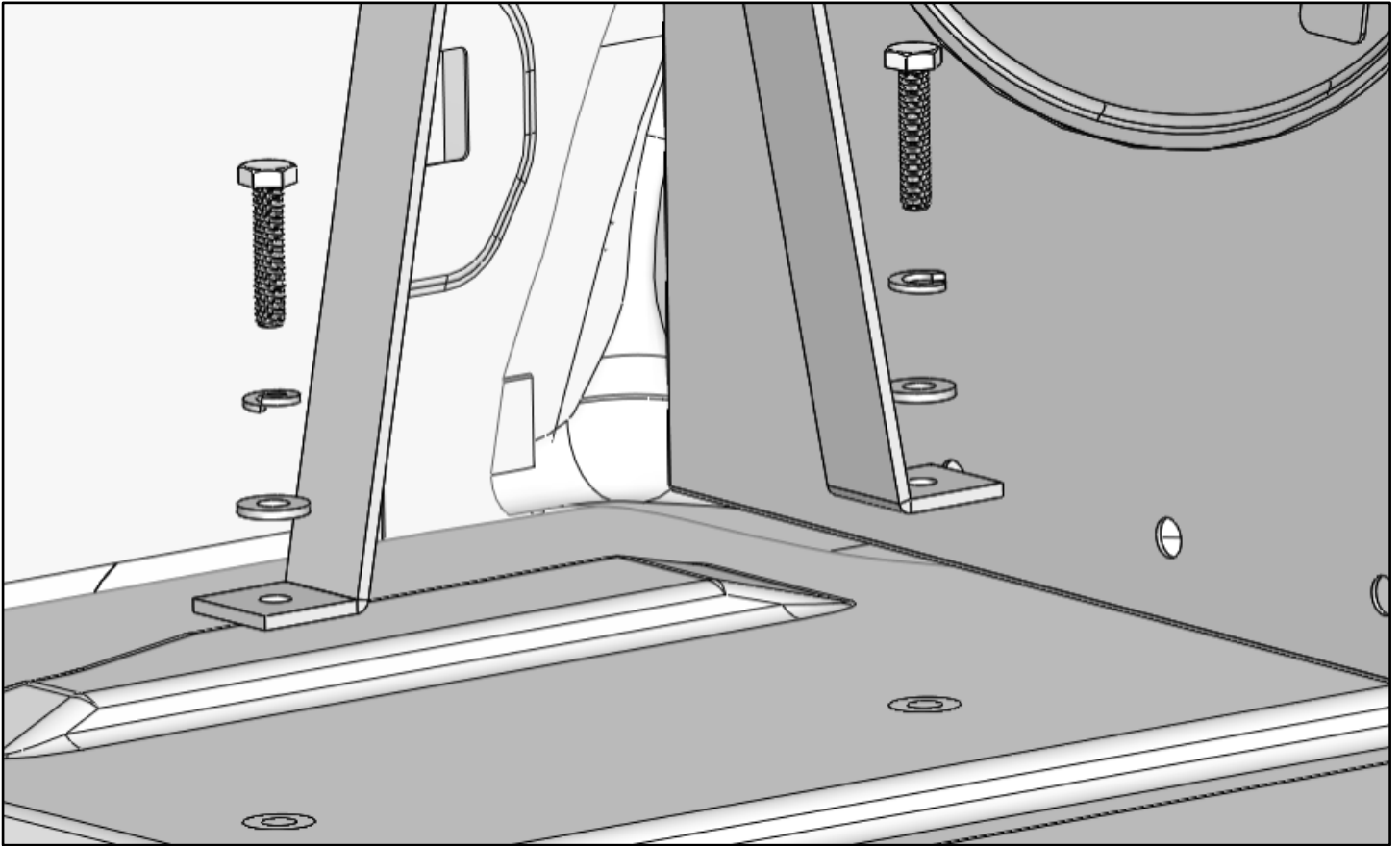
- Find desired location for cone holder to be installed.
- Mark location through the holes in the cone holder and remove.
- Drill marked locations using 25/64" bit.
- ENSURE SAFETY PRIOR TO DRILLING.
- Install plus nuts using plus nut tool.

A multiple of different locations can be used to install a cone holder



Step 2 – Attach

- Replace cone holder, bolt cone holder to floor using 1/4" x 1-1/4" hex head (1), 1/4" split lock washer (2) and a 1/4" flat washer (3).
- TIGHTEN



Ensure all bolts are tight. Your Installation is now complete.